



PLAN 2

5 BEDROOMS + LOFT + DEN

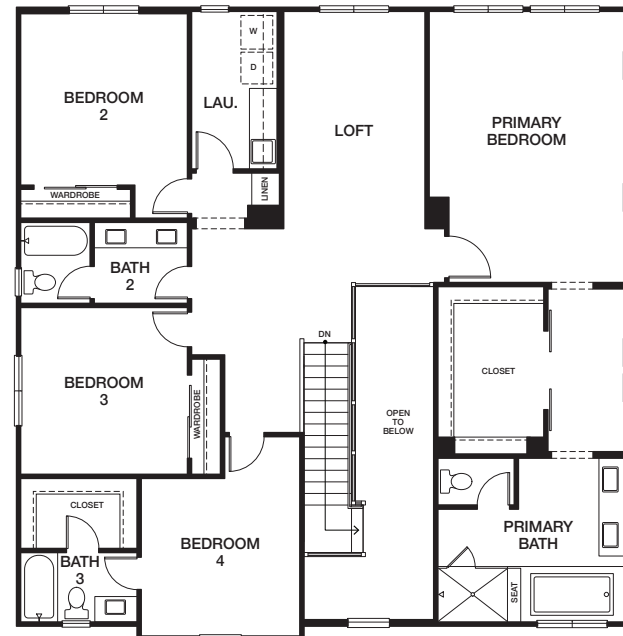
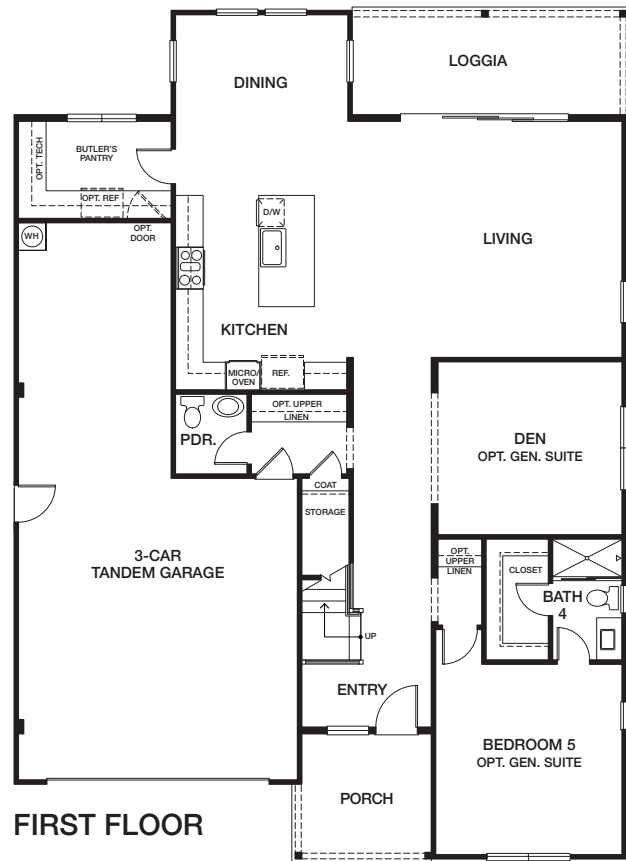
4.5 BATHS

APPROX 3,366 SQ FT

HERITAGE

on

6TH STREET



HERITAGE ON 6TH STREET | 700 W. SIXTH STREET | GILROY, CA 95020 | HERITAGEon6TH.com | 669.201.0866



Square footages are approximate only. All renderings, floor plans and maps are artist's conception and are not intended to be an accurate representation of buildings, fencing, walks, driveways or landscaping and are not necessarily to scale. Many items vary considerably from homesite to homesite including, but not limited to, porches, storage areas, windows, doors, cabinets and floor plan layout details. Specification and appointments of the model home and/or floor plans depicted may be unique and not necessarily replicated or available in all homes and are subject to change at any time without notice. See a sales representative for details. 01.03.25